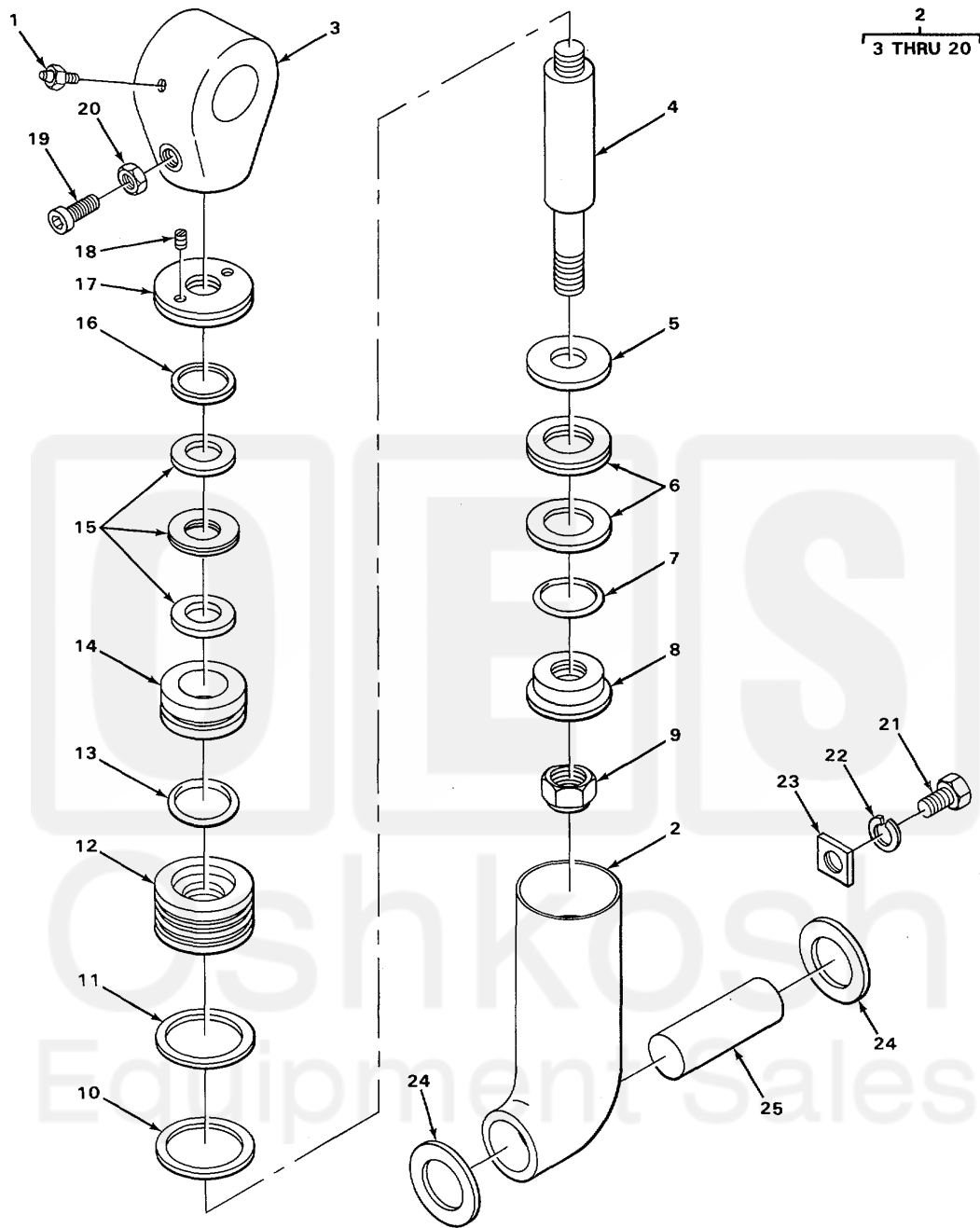


SECTION II



TA508636

FIGURE 75. TILT CYLINDER ASSEMBLY.

SECTION II				TM 10-3930-222-24P	
(1) ITEM NO	(2) SMR CODE	(3) CAGEC	(4) PART NUMBER	(5) DESCRIPTION AND USABLE ON CODES (UOC)	(6) QTY
GROUP 2404 TILT CYLINDERS AND TILT CRANK					
FIG. 75 TILT CYLINDER ASSEMBLY					
1	PADZZ	96906	MS15006-1	FITTING, LUBRICATION BUSHING .....	2
*2	PAOFH	02614	C632077	CYLINDER ASSEMBLY, A TILT .....	2
				UOC: CGZ	
2	PFOFF	63018	ACV114899A	CYLINDER ASSEMBLY TILT .....	2
				UOC:CGY, CJG, CJH, CJJ	
3	PAFZZ	02614	3C600437	. CONNECTOR, ROD END PISTON .....	1
				UOC:CGY, CJG, CJH, CJJ	
3	PAFZZ	30076	195824	. ROD END, THREADED PISTON .....	1
				UOC:CGZ	
4	PAFZZ	02614	2C600434	. SHAFT, SHOULDERED PISTON .....	1
5	XDFZZ	02614	2C11206	. PISTON, HALF OUTER .....	1
6	KFFZZ	02614	2C1470A	. PACKING SET PISTON, OUTER PART OF .....	1
				KIT P/N 149265.....	
*7	KFFZZ	96906	MS28775-219	. PACKING, PREFORMED PISTON TO ROD.....	1
				PART OF KIT P/N 149265 .....	
8	XBFZZ	02614	2C10771	. PISTON HALF INNER .....	1
9	XBFZZ	02614	2C5795	. NUT, PLAIN, HEXAGON PISTON RETAINING .....	1
				UOC:CGY, CJG, CJH, CJJ	
9	XDFZZ	02614	C5885	. NUT, PLAIN, HEXAGON PISTON RETAINING .....	1
				UOC:CGZ	
10	KFFZZ	02614	2C2740	. PACKING, PREFORMED PISTON ROD.....	1
				BUSHING RETAINER PART OF KIT P/N 149266 .....	
11	KFFZZ	02614	2C2891	. RING BACK-UP, RETAINER PACKING PART .....	1
				OF KIT P/N 149266.....	
12	PAFZZ	30076	600435	. RETAINER, SPECIAL BUSHING SEAL .....	1
13	KFFZZ	88044	AN6227-33	. PACKING, PREFORMED PISTON ROD.....	1
				BUSHING PART OF KIT P/N 149266.....	
14	PAFZZ	02614	1C10783	. BUSHING, PISTON ROD .....	1
15	KFFZZ	02614	2C7505A	. PACKING ASSEMBLY PISTON ROD PART.....	1
				OF KIT P/N 149266.....	
16	KFFZZ	02614	2C13781	. RING, WIPER PISTON ROD PART OF KIT .....	1
				P/N 149266 .....	
17	XBFZZ	02614	2C600436	. WASHER, THREADED .....	1
18	XBFZZ	02614	2C4969	. SETSCREW .....	2
19	XBFZZ	02614	2C5433	. SETSCREW PISTON END MOUNTING .....	1
20	PAFZZ	96906	MS35691-17	. NUT, PLAIN, HEXAGON PISTON END .....	1
				MOUNTING.....	
21	PAOZZ	96906	MS90727-58	SCREW, CAP, HEXAGON H KEEPER PLATE .....	2
				MOUNTING.....	
22	PADZZ	96906	MS35338-48	WASHERLOCK KEEPER PLATE MOUNTING.....	2
*23	XBOZZ	30076	61643	PLATE, KEEPER, SHEAVE.....	2
24	PAOZZ	30076	39037	WASHER, FLAT TILT CYLINDER MOUNTING .....	4
				PIN .....	
25	PAOZZ	30076	114900	SHAFT, STRAIGHT TILT CYLINDER .....	2
				MOUNTING.....	

END OF FIGURE